

THE POLO

STANLEY/STELLA

About

Stanley/Stella	3
Polo made differently	10
Polo collection	12

Unisex

Short sleeves	
Prepster	14
Prepster Vintage	16

Long sleeves	
Prepster Long Sleeve	18

Women

Short sleeves	
Stella Elliser	20

Polo dress	
Stella Paiger	22

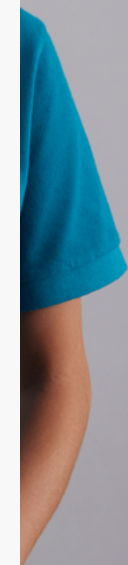
Kids

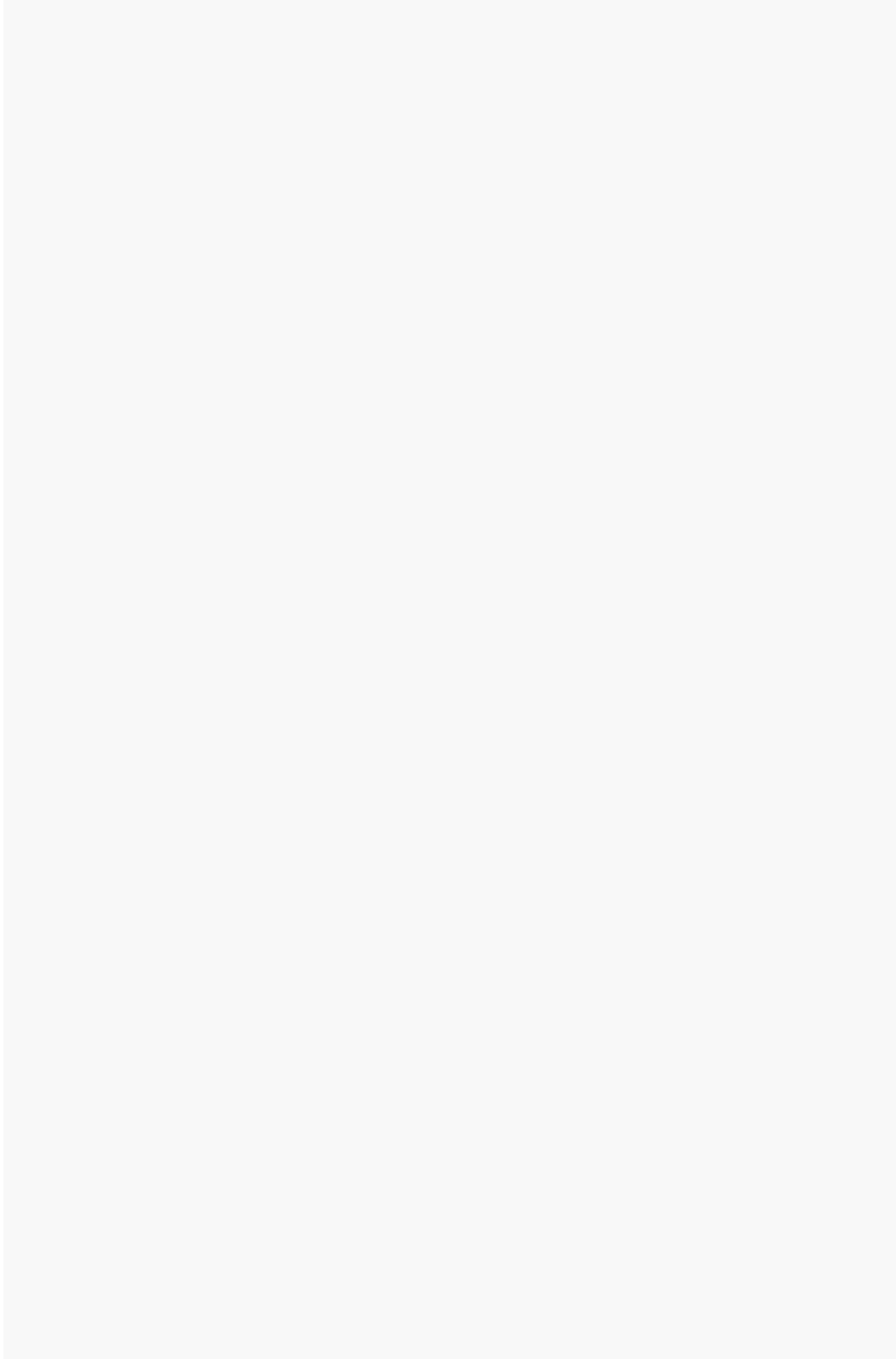
Short sleeves	
Mini Sprinter	24

Index

Colours	26
Colour combinations	28
Sizes	30

Made Differently





Made Differently



Made Differently

Responsible game changers. Quality seekers. Stanley/Stella is a community of passionate individuals, driven by a common desire to reinvent fashion for a better world. Since our conception in 2012, we have made it our mission to produce impeccable garments, while building a transparent and sustainable fashion ecosystem.

Our thoughtful approach is reflected in the premium quality of our garments. We believe in the power of simplicity and aim to create refined pieces that we are proud to sell and wear. Each item in our collection allows the wearer to express their style, while never compromising their values and beliefs.

There is power in numbers, which is why we work exclusively with those who share our values. Together with our suppliers, dealers, employees and customers, we form a community of like-minded individuals, driven by desire for innovation and change. Together, we are making this change happen, one ethically crafted garment at a time.

STANLEY/STELLA





Innovation

Embracing the way forward
Stanley/Stella is driven by innovation and our entrepreneurial spirit. We believe choosing the right partners empowers innovation. We are always experimenting to improve our products, our digital services and our entire supply chain.

Excellence

Inspiring ambition
For you, as for us, every detail counts. We make no compromise when it comes to reaching for excellence. In every aspect of our business, we aim to surpass our own results. Our collections and actions should always raise the standards and change the perception of the textile industry.

People

Committing to community
Everything at Stanley/Stella is about people. It is our essence. From our dealers and suppliers to our employees and customers, we ensure everyone feels listened to and is treated with respect and dignity. We actively strive to create an ecosystem with a positive spirit.

Sustainability

Advocating for positive change
Sustainability is at the core of our business culture. We are committed to continuously improving how we create and operate, from the cotton farm to the collection, to how we manage our waste. We always act with transparency for people, the planet, and society.



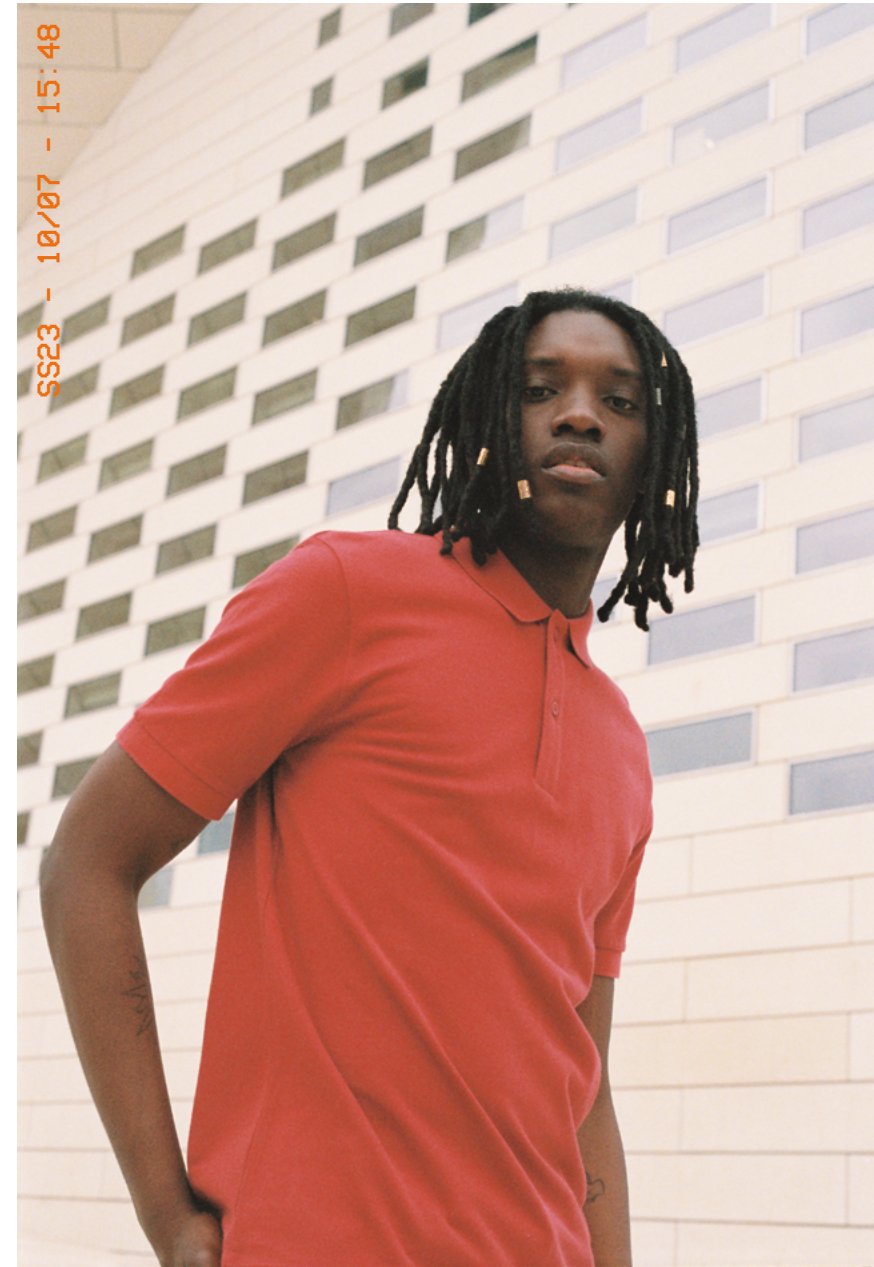




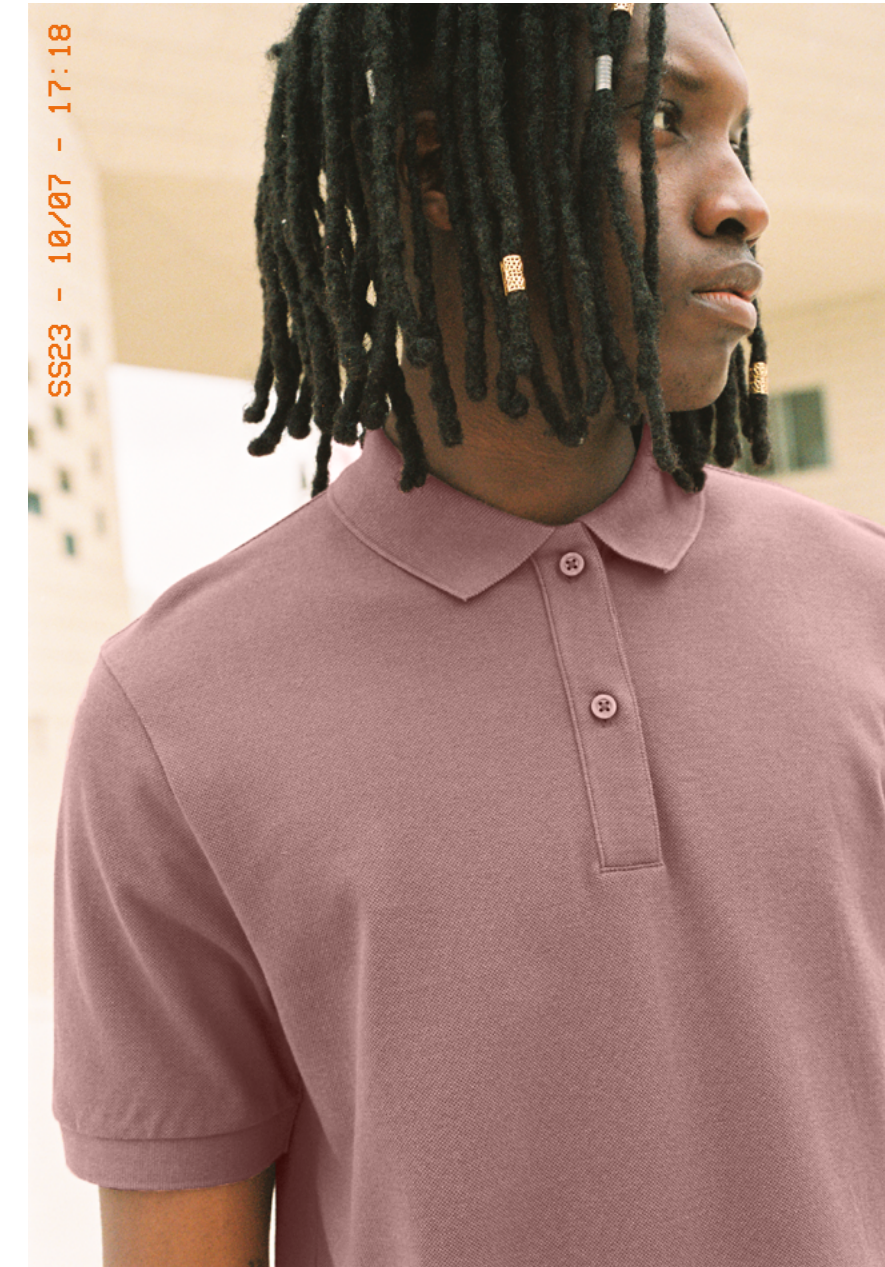
Terence is 190cm, size L
Prepster in Stargazer



Terence is 190cm, size L
Prepster in Day Fall



Terence is 190cm, size L
Prepster in Red Earth



Terence is 190cm, size L
Prepster in Kaffa Coffee



← Rose is 173cm, size S
Creator in Kaffa Coffee,
Prepster in Red Earth
and Fisherman Beanie in Worker Blue

→ Terence is 190cm, size L
River in French Navy and Prepster in Red Earth
Rose is 173cm, size S
Bomber in French Navy, Prepster in Day Fall
and Fisherman Beanie in Worker Blue



Polos made differently

Stanley/Stella polos are made to break the rules. With their inclusive unisex fit, they not only look great but also offer the ultimate in everyday comfort. You'll find a range of classic and on-trend colours, as well as an exceptional piqué fabric that shows off decoration to perfection. A must-have for anyone who wants a made-to-last polo that reflects their ethical and eco-friendly values.

Sustainable by design

Our Polo Collection uses 100% organic cotton – sourced from smallholder cotton farmers in India – and has recycled polyester buttons. Stanley/Stella works closely with its five factories in Bangladesh to ensure fair working conditions and the smallest possible environmental footprint.

A look that's right on trend

The modern, comfort fit – with a straight body and relaxed sleeve – makes our polos a popular choice for all genders, ages, and body types. The narrow placket gives a more refined look than other polos you'll find, and the carefully designed collar sits – and stays – just like it should.

Quality that stands out

The outstanding handfeel makes Stanley/Stella polos a delight to wear, and an excellent piqué ensures that whatever decoration technique you choose – embroidery, digital printing, or transfer – your design will keep looking good, wear after wear.



Unisex



PREPSTER STPU331

230 GSM
Medium fit
XXS - 5XL*
28 colours

p. 14



PREPSTER VINTAGE STPU335

230 GSM
Medium fit
XXS - 3XL
5 colours

p.16



PREPSTER LONG SLEEVE STPU332

230 GSM
Medium fit
XXS - 3XL
14 colours

p. 18

Polo Collection

Women



STELLA ELLISER STPW333

200 GSM
Fitted
XXS - 3XL
12 colours

p. 20



STELLA PAIGER STDW162

230 GSM
Medium fit
XS - XXL
6 colours

p. 22

Kids



MINI SPRINTER STPK908

220 GSM
Medium fit
3/4 - 12/14 years
9 colours

p. 24

Terence is 190cm, size L
 Prepster in Kaffa Coffee
 Andrea is 176cm, size XS
 Prepster in Kaffa Coffee



Iconic

PREPSTER STPU331

The unisex polo

230 GSM

Medium fit

XXS - 5XL*

Fabric

Piqué
 100 % organic ring-spun combed cotton

Combo

Women → Stella Elliser p.20

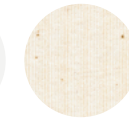
Kids → Mini Sprinter p.24



Whites



White



Natural Raw

Colours



Black



Anthracite



Spectra Yellow



Jojoba**



Sage



Glazed Green



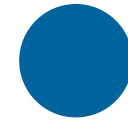
Stargazer



Ocean Depth



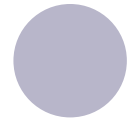
Sky Blue



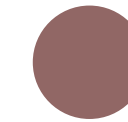
Royal Blue



French Navy



Lavender



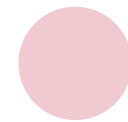
NEW
Kaffa Coffee



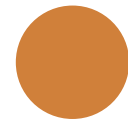
Orchid Flower



Burgundy



Cotton Pink



NEW
Day Fall



Bright Orange

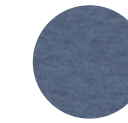


Red

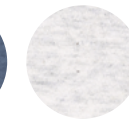


NEW
Red Earth

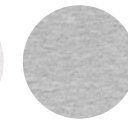
Essential heathers



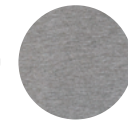
Dark Heather Blue



Cream Heather Grey



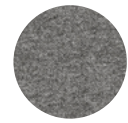
Heather Grey



NEW
Mid Heather Grey



Dark Heather Grey



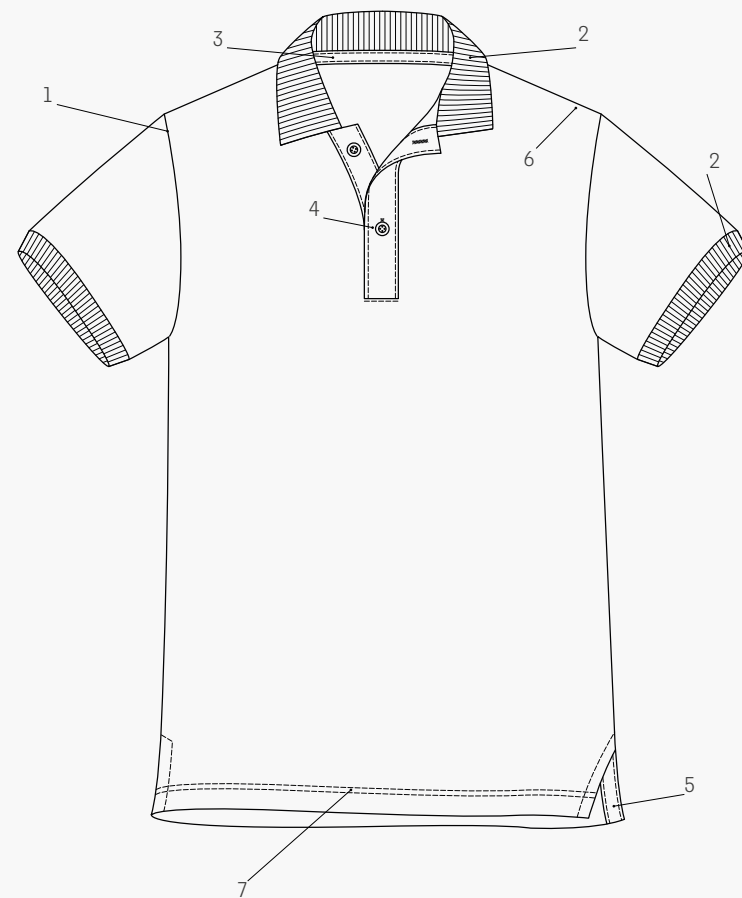
Black Heather Mid Grey

* 4XL and 5XL available in White, Black, French Navy, Burgundy, Red and Heather Grey
 ** Colour being discontinued end of 2022

Terence is 190cm, size L
 Prepster in Kaffa Coffee
 Andrea is 176cm, size XS
 Prepster in Kaffa Coffee



Specifications



- 1 - Set-in sleeve
- 2 - Flat knit rib on collar and sleeve hem
- 3 - Inside heavy single jersey back neck tape
- 4 - Front placket with two buttons in matching body colour
- 5 - Slit at side seams with heavy single jersey facing
- 6 - Single needle topstitch at shoulder seams
- 7 - Bottom hem with narrow double needle topstitch



Whites



Colours



Essential heathers



* 4XL and 5XL available in White, Black, French Navy, Burgundy, Red and Heather Grey
 ** Colour being discontinued end of 2022

Carla is 171cm, size XS
Prepster Vintage in G. Dyed Cadet Blue



Core

PREPSTER VINTAGE STPU335

The unisex vintage polo

230 GSM

Medium fit

XXS - 3XL

Fabric

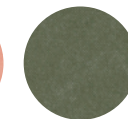
Piqué
100 % organic ring-spun combed cotton



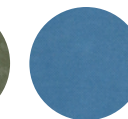
Colours



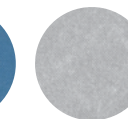
G. Dyed Aged
Rose Clay



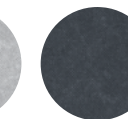
G. Dyed Aged
Khaki



G. Dyed
Cadet Blue



G. Dyed Aged
Light Grey

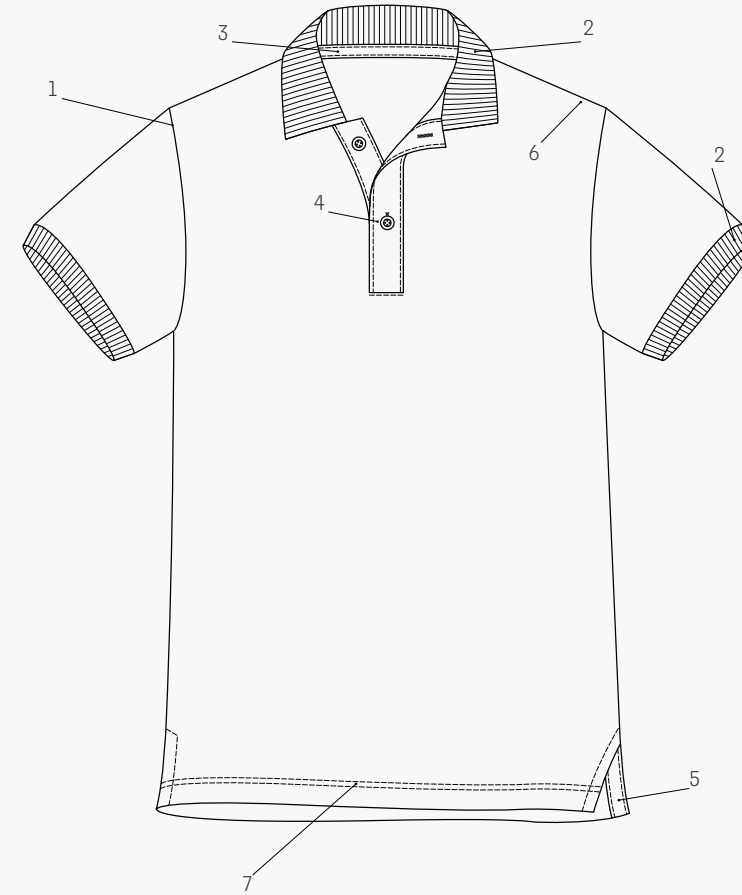


G. Dyed India
Ink Grey


Carla is 171cm, size XS
Prepster Vintage in G. Dyed Cadet Blue



Specifications

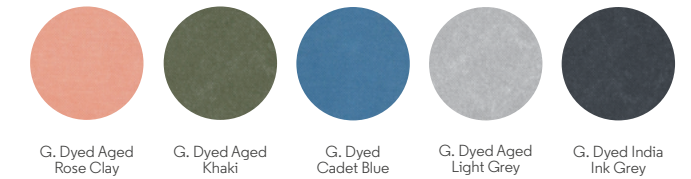


- 1 - Set-in sleeve
- 2 - Flat knit rib on collar and sleeve hem
- 3 - Inside heavy single jersey back neck tape
- 4 - Front placket with two buttons in matching body colour
- 5 - Slit at side seams with heavy single jersey facing
- 6 - Single needle topstitch at shoulder seams
- 7 - Bottom hem with narrow double needle topstitch

 Garment dyed product, each garment may vary in appearance.
Colour may bleed, please follow our care label. Read print recommendations carefully.



Colours



Terence is 190cm, size L
Carla is 171cm, size XS
Prepster Long Sleeve in Dark Heather Blue



Core

PREPSTER LONG SLEEVE STPU332

The unisex polo long sleeve

230 GSM

Medium fit

XXS - 3XL

Fabric

Piqué
100 % organic ring-spun combed cotton



Whites



White

Colours



Black



Anthracite



Spectra Yellow



Jojoba **



Sage



NEW
Stargazer



Glazed Green



French Navy



Burgundy

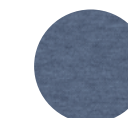


Red

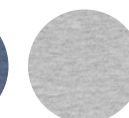


NEW
Red Earth

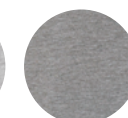
Essential heathers



Dark Heather
Blue



Heather
Grey



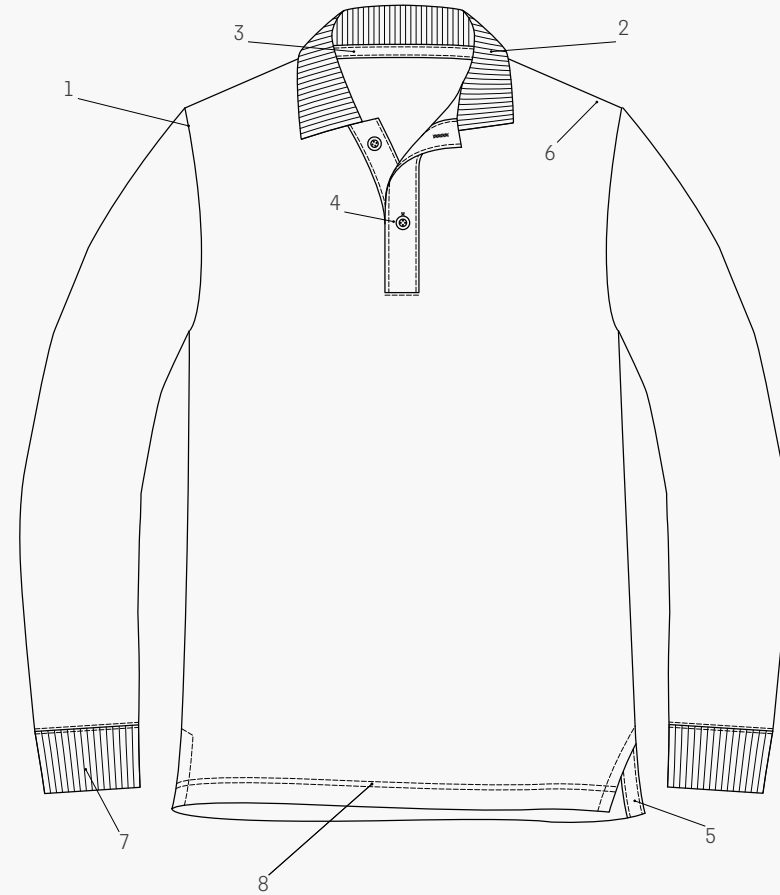
NEW
Mid Heather
Grey

** Colour being discontinued end of 2022

Terence is 190cm, size L
 Carla is 171cm, size XS
 Prepster Long Sleeve in Dark Heather Blue



Specifications



- 1 - Set-in sleeve
- 2 - Flat knit rib on collar
- 3 - Inside heavy single jersey back neck tape
- 4 - Front placket with two buttons in matching body colour
- 5 - Slit at side seams with heavy single jersey facing
- 6 - Single needle topstitch at shoulder seams
- 7 - 1x1 rib at sleeve hem
- 8 - Bottom hem with narrow double needle topstitch



Whites



White

Colours



Black



Anthracite



Spectra Yellow



Jojoba **



Sage



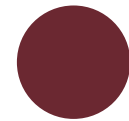
NEW
Stargazer



Glazed Green



French Navy



Burgundy

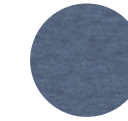


Red

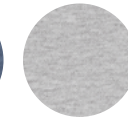


NEW
Red Earth

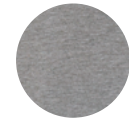
Essential heathers



Dark Heather
Blue



Heather
Grey



NEW
Mid Heather
Grey

** Colour being discontinued end of 2022

Youna is 176cm, size XS
Stella Elliser in Orchid Flower



Core

STELLA ELLISER STPW333

The women's polo

200 GSM

Fitted

XS - XXL

Fabric

Piqué
95% organic ring-spun combed cotton
5% elastane

Combo

Unisex → Preptser p.14

Kids → Mini Sprinter p.24

Whites



White

Colours



Black



Anthracite



Jojoba **



Sky Blue



Royal Blue



French Navy



Orchid Flower



Burgundy



Cotton Pink



Red

Essential heathers



Heather
Grey



** Colour being discontinued end of 2022

Youna is 176cm, size XS
Stella Elliser in Orchid Flower



Specifications



- 1 - Set-in sleeve
- 2 - Flat knit rib on collar and sleeve hem
- 3 - Inside heavy single jersey back neck tape
- 4 - Front placket with two buttons in matching body colour
- 5 - Slit at side seams with heavy single jersey facing
- 6 - Single needle topstitch at shoulder seams
- 7 - Bottom hem with narrow double needle topstitch



Whites



White

Colours



Black



Anthracite



Jojoba **



Sky Blue



Royal Blue



French Navy



Orchid Flower



Burgundy



Cotton Pink



Red

Essential heathers



Heather
Grey

** Colour being discontinued end of 2022

Callista is 176cm, size S
Stella Paiger in Black



Core

STELLA PAIGER STDW162

The women's polo dress

230 GSM

Medium fit

XS - XXL

Fabric

Piqué
100 % organic ring-spun combed cotton

Whites



White

Colours



Black



French Navy



Orchid Flower



Red

Essential heathers



Heather
Grey



Callista is 176cm, size S
Stella Paiger in Black



Specifications



- 1 - Set-in sleeve
- 2 - Flat knit rib on collar
- 3 - Inside heavy single jersey back neck tape
- 4 - Front placket with two buttons in matching body colour
- 5 - Side panels in self fabric
- 6 - Single needle topstitch at shoulder seams
- 7 - Sleeve hem and bottom hem with narrow double needle topstitch



Whites



White

Colours



Black



French Navy



Orchid Flower



Red

Essential heathers



Heather
Grey

Eamon is 128cm, size 7/8 years
Mini Sprinter in Sky Blue



Core

MINI SPRINTER STPK908

The iconic kids' polo

220 GSM

Medium fit

3/4 - 12/14 years

Fabric

Piqué
100 % organic ring-spun combed cotton

Combo

Unisex → Preptser p.14

Women → Stella Elisser p.20

Whites



White

Colours



Sky Blue



Royal Blue



French Navy



Glazed Green



Jojoba**



Orchid Flower



Red

Essential heathers



Heather
Grey

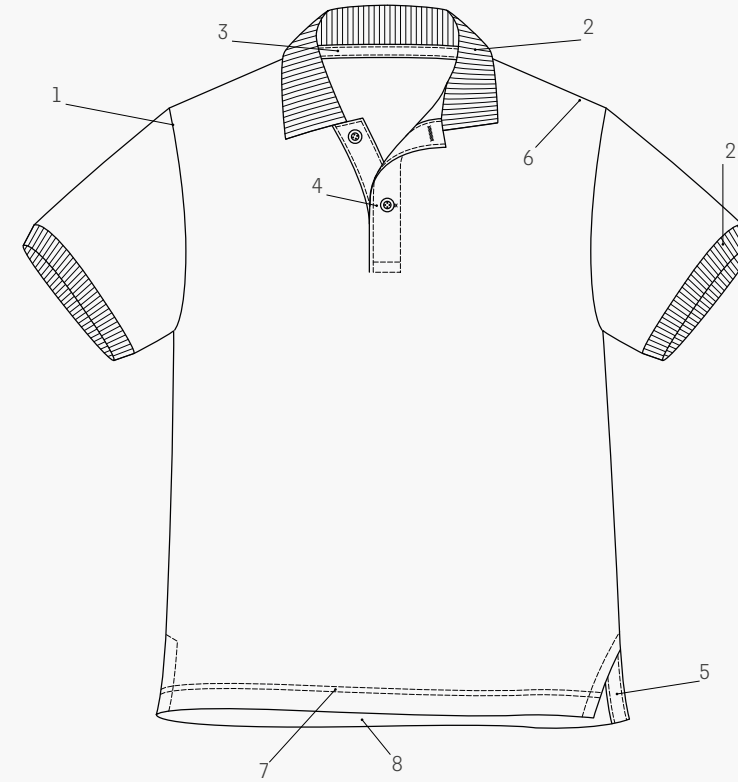


** Colour being discontinued end of 2022

Eamon is 128cm, size 7/8 years
Mini Sprinter in Sky Blue



Specifications



- 1 - Set-in sleeve
- 2 - Flat knit rib on collar and sleeve hem
- 3 - Inside back neck tape in single jersey
- 4 - Front placket with two buttons in matching body colour
- 5 - Slit at side seams with single jersey facing
- 6 - Single needle topstitch at shoulder seams
- 7 - Bottom hem with narrow double topstitch
- 8 - Back length is longer than front length



Whites

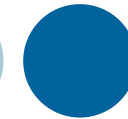


White

Colours



Sky Blue



Royal Blue



French Navy



Glazed Green



Jojoba**



Orchid Flower



Red

Essential heathers





Heather
Grey


** Colour ending end of 2022


Colours

Whites


 **White - C001**
Pantone 11-0601 TCX CMYK 06-04-05-00
Pantone 2706 C RGB 244-249-255


 **Natural Raw - C054**
Pantone 12-0304 TCX CMYK 05-08-16-00
Pantone 7527 C RGB 224-213-198


 **Red - C004**
Pantone 19-1763 TCX CMYK 08-95-76-09
Pantone 200 C RGB 189-22-44


 **Red Earth - C086**
Pantone 19-1655 TCX CMYK 14-86-65-30
Pantone 492 C RGB 126-52-57

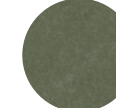
Colours


 **Black - C002**
Pantone 19-4004 TCX CMYK 73-60-55-65
Pantone 426 C RGB 42-43-45


 **Anthracite - C253**
Pantone 19-3906 TCX CMYK 59-45-44-50
Pantone 7540 C RGB 74-75-77


 **Spectra Yellow - C204**
Pantone 14-0957 TCX CMYK 00-33-93-00
Pantone 7409 C RGB 247-183-24


 **G. Dyed Aged Rose Clay - C522**
Pantone 16-1330 TCX CMYK 04-44-39-01
Pantone 7612 C RGB 210-147-128

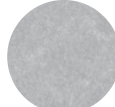
 **G. Dyed Aged Khaki - C548**
Pantone 18-0420 TCX CMYK 52-33-59-41
Pantone 4223 C RGB 96-102-81


 **G. Dyed Cadet Blue - C511**
Pantone 18-4032 TCX CMYK 71-38-16-18
Pantone 2152 C RGB 38-102-145


 **Jojoba - C067**
Pantone 14-0935 TCX CMYK 07-16-56-02
Pantone 3599 C RGB 230-208-135


 **Sage - C047**
Pantone 16-0613 TCX CMYK 24-19-39-09
Pantone 7536 C RGB 163-159-134


 **Glazed Green - C036**
Pantone 19-5030 TCX CMYK 78-37-50-59
Pantone 4168 C RGB 38-68-69


 **G. Dyed Aged Light Grey - C524**
Pantone 16-3916 TCX CMYK 29-20-21-07
Pantone Cool Gray 7 C RGB 146-148-155

 **G. Dyed Aged India Ink Grey - C520**
Pantone 19-3902 TCX CMYK 65-51-42-56
Pantone 4119 C RGB 59-54-60

 **Stargazer - C702**
Pantone 19-4316 TCX CMYK 78-37-36-47
Pantone 4161 C RGB 57-80-92

 **Ocean Depth - C710**
Pantone 19-4535 TCX CMYK 95-13-29-50
Pantone 7470 C RGB 0-97-177


 **Sky Blue - C232**
Pantone 15-4020 TCX CMYK 38-12-12-01
Pantone 644 C RGB 155-183-212


 **Dark Heather Blue - C652**
Pantone 19-3919 TCX CMYK 67-46-27-35
Pantone 4131 C RGB 78-83-104

 **Cream Heather Grey - C680**
Pantone 13-0002 TCX CMYK 12-10-12-00
Pantone Warm Gray 1 C RGB 219-213-209

 **Dark Heather Grey - C651**
Pantone 19-4005 TCX CMYK 68-52-51-68
Pantone 426 C RGB 43-44-48


 **Royal Blue - C230**
Pantone 19-4245 TCX CMYK 93-45-06-19
Pantone 7462 C RGB 0-90-146


 **French Navy - C727**
Pantone 19-3923 TCX CMYK 81-59-34-65
Pantone 4280 C RGB 40-45-60


 **Lavender - C063**
Pantone 15-3919 TCX CMYK 31-26-11-03
Pantone 4123 C RGB 181-180-199


 **Heather Grey - C250**
Pantone 16-3915 TCX CMYK 32-23-23-12
Pantone 4289 C RGB 152-151-154


 **Mid Heather Grey - C650**
Pantone 17-4014 TCX CMYK 44-35-34-28
Pantone 4278 C RGB 128-125-127


 **Orchid Flower - C068**
Pantone 19-2434 TCX CMYK 13-89-07-19
Pantone 7648 C RGB 157-49-113


 **Burgundy - C244**
Pantone 19-1724 TCX CMYK 30-84-55-55
Pantone 4101 C RGB 100-36-46


 **Cotton Pink - C005**
Pantone 13-2802 TCX CMYK 05-27-12-00
Pantone 510 C RGB 242-193-209

 **Black Heather Mid Grey - C598**
Pantone 18-0201 TCX CMYK 44-38-35-28
Pantone 4195 C RGB 118-116-117

 **Kaffa Coffee - C085**
Pantone 18-1612 TCX CMYK 31-54-43-31
Pantone 4091 C RGB 133-101-100





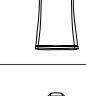

 **Bright Orange - C013**
Pantone 16-1363 TCX CMYK 00-72-98-00
Pantone 166 C RGB 233-92-32

 **Day Fall - C087**
Pantone 16-1448 TCX CMYK 08-53-80-12
Pantone 7583 C RGB 188-126-65







 **Special heathers**



Colour combination

		C001 - White	C002 - Black	C004 - Red	C005 - Cotton Pink	C013 - Bright Orange	C036 - Glazed Green	C047 - Sage	C054 - Natural Raw	C063 - Lavender	C067 - Jojoba	C068 - Orchid Flower	C085 - Kaffa Coffee	C086 - Red Earth	C087 - Day Fall	C204 - Spectra Yellow	C230 - Royal Blue	C232 - Sky Blue	C244 - Burgundy	C250 - Heather Grey	C253 - Anthracite	C511 - G. Dyed Cadet Blue	C520 - G. Dyed India Ink Grey	C522 - G. Dyed Aged Rose Clay	C524 - G. Dyed Aged Light Grey	C548 - G. Dyed Aged Khaki	C598 - Black Heather Mid Grey	C650 - Mid Heather Grey	C651 - Dark Heather Grey	C652 - Dark Heather Blue	C680 - Cream Heather Grey	C702 - Stargazer	C710 - Ocean Depth	C727 - French Navy			
Prepster p.14		•	•	•	•	•	•	•	•	•	•	•	•	•	•	•	•	•	•	•							•	•	•	•	•	•	•	•	•	•	
Prepster Vintage p.16																						•	•	•	•	•											
Prepster Long Sleeve p.18		•	•	•			•	•			•			•		•			•	•	•						•			•			•		•		
Stella Elliser p.20		•	•	•	•						•	•					•	•	•	•																•	
Stella Paiger p.22		•	•	•								•								•																	•
Mini Sprinter p.24		•		•			•				•	•					•	•		•																	•

Sizes

		2XS	XS	S	M	L	XL	2XL	3XL	4XL	5XL	3/4 yrs	5/6 yrs	7/8 yrs	9/11 yrs	12/14 yrs
Prepster p.14		•	•	•	•	•	•	•	•	•*	•*					
Prepster Vintage p.16		•	•	•	•	•	•	•	•							
Prepster Long Sleeve p.18		•	•	•	•	•	•	•	•							
Stella Elliser p.20		•	•	•	•	•	•	•	•							
Stella Paiger p.22			•	•	•	•	•	•								
Mini Sprinter p.24												•	•	•	•	•

* Size available in White, Black, French Navy, Burgundy, Red and Heather Grey